



360° LEADERSHIP PROGRAM

HOLISTIC | EFFICIENCY-BOOSTING | SUSTAINABLE

We bring your strategy to life

32% MORE PERFORMANCE

With the 360° Leadership Program, you achieve better results with your team.



How is the program structured?

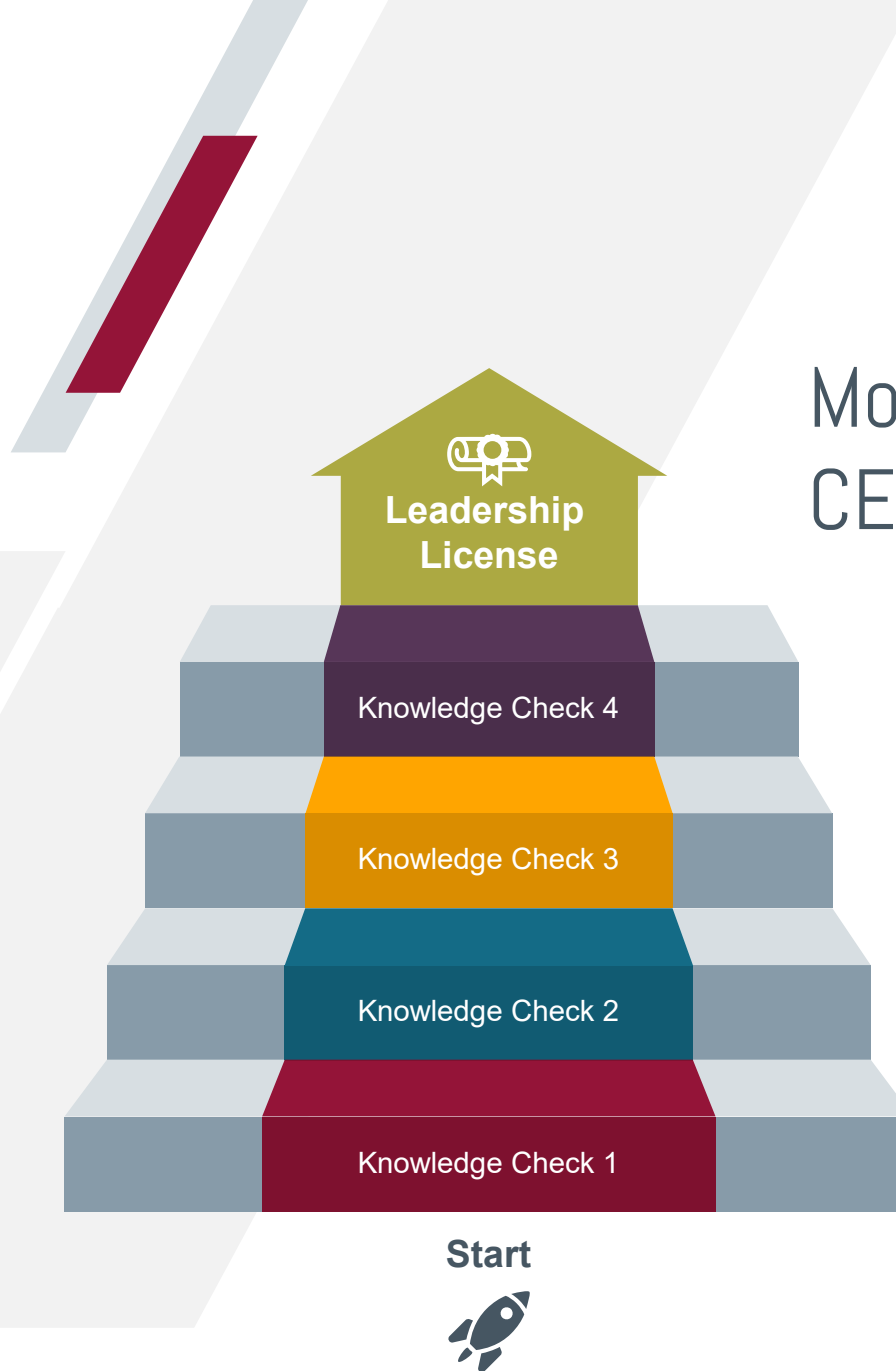
4 training modules, each 12 weeks long. The entire program lasts approx. 12–18 months.



Training Goals

All essential fundamentals, skills, and competencies in one program: 360° input for 360° leadership.





Motivated to succeed CERTIFICATION

Lead your Team

Lead your Employees

Lead your
Business Unit

Lead yourself

Each module includes:

- › 8 Learning Nuggets
- › 8 Web Sessions
- › Knowledge Check

PROGRAM STRUCTURE

Each module in the MTI 360° Leadership Program consists of eight web sessions, each lasting 90 minutes. In these sessions, experienced MTI trainers provide not only theoretical input but also guide participants in working on practice-relevant topics in individual and group assignments. Between the web sessions, various learning nuggets related to the topics are also completed independently.



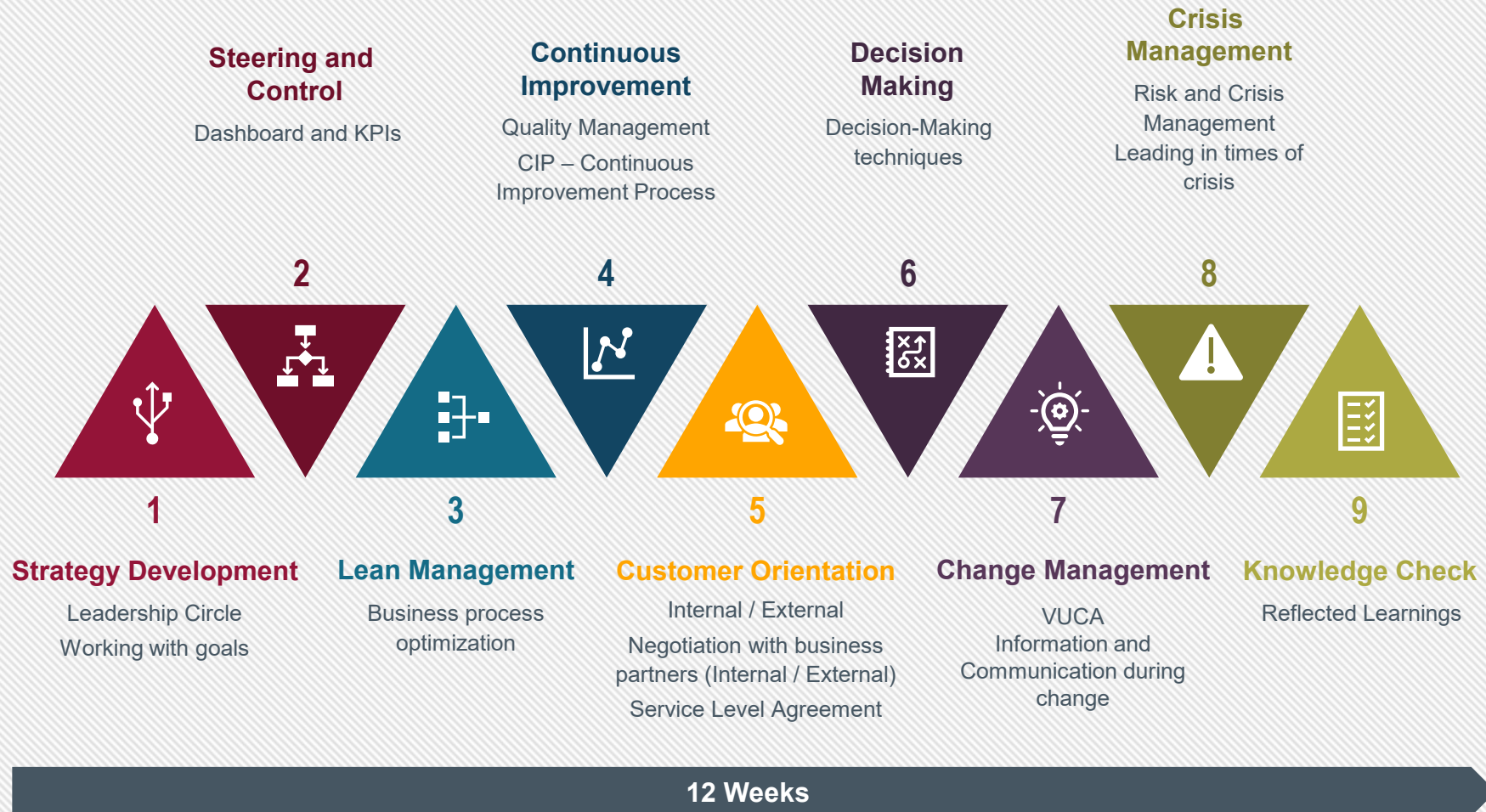


Module 1 | Lead yourself



12 Weeks

Module 2 | Lead your Business Unit



Module 3 | Lead your Employees



12 Weeks

Module 4 | Lead your Team



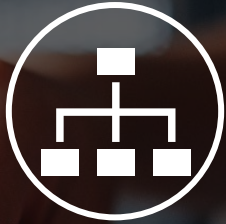
Inspiring leadership as the key to success

Based on studies about the future of leadership, our 360° Leadership Program provides leaders with **all the fundamentals and skills for a modern, inspiring, and effective leadership style.**



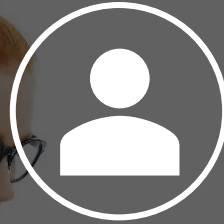
Our Approach – Your Benefit

The combination of experienced trainers with many years of leadership experience and a modern, sustainable learning concept creates optimal synergy effects.



Small Units

Sustainable learning success is ensured through small units. The weekly time investment is approx. 2 hours. Extended engagement with the topic (12 weeks) supports the 70/20/10 rule.



Self-Directed

Strengthening of personal responsibility through self-learning materials such as learning impulses, case studies, knowledge checks, etc. Participants also experience the use of new digital tools and solutions.



Holistic

A holistic approach conveys all the necessary fundamentals, skills, and competencies for a 360° leadership style. 4 cross-functional modules combine the knowledge needed for the leaders of tomorrow.

Here for you at any time!

We appreciate your interest and are available anytime for questions and answers.

Benefit from the advantages of the 360° Leadership Program. We're happy to advise you and create a customized offer.

Schedule an Appointment now



Machwürrh Team International GmbH

Dohrmanns Horst 19

27374 Visselhövede

Phone: +49 4262 93 12 - 0

Fax: +49 4262 93 12 99

Email: info@mwteam.com

www.mticonsultancy.com



+ Hans-Peter Machwürrh

Phone: +49 4262 93 12-0

Email: hans-peter.machwuerrh@mwteam.com